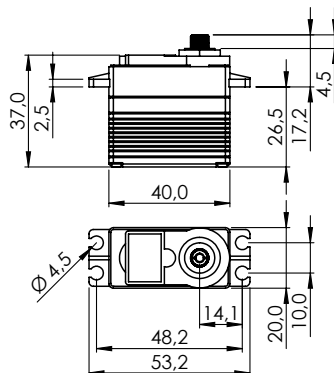


D954SW

#116954 #1-01310



General Specification		D954SW	
Control System	Pulse Width Modulation (PWM)		
	PWM Range	900µs 1500µs 2100µs	
Connector Type	Hitec 3P (JR 3P compatible)		
Position Sensor Type	Indirect Drive / 1M Cycle Long Life		
Motor Type	Coreless Metal Brush		
Controller (MCU)	Digital Amplifier with Mosfet Drive		
Operating Voltage Range	4.7V ~ 7.4V		
Operating Voltage	At 4.8V		At 7.4V
No Load Speed	316°/s (53RPM)		500°/s (83RPM)
Stall Torque	16.0kgcm (156.91Ncm)		24.5kgcm (240.26Ncm)
Idle Current	30mA		30mA
No Load Running Current	300mA		500mA
Stall Current	3,200mA		5,200mA
Deadband Width	1µs		1µs
Operating Travel	Default	±60° **	
	Programmable	±87,5°	
	Multi Turn	n/a	
	Continuous Rotation	n/a	
Operating Temperature Range	-20°C ~ +60°C (-4°F ~ +140°F)		
Storage Temperature Range	-		
Vibrations at No Load	-		
Connector Wire Length	300mm		
Connector Wire Gauge	20AWG		
Connector Wire Strand Count	80EA		
Outline Dimensions	40.0 x 20.0 x 37.0mm		
Weight*	64.7g		
Ball Bearing	Dual Ball Bearing / MR106		
Case Material	Engineering Plastic		
Gear Material	1 Metal-Plastic & 3 Steel Gears		
Gear Train Backlash	-		
Horn Gear Spline	H25T Ø6.0		
Accessories	Mounting Hardware, HD-IM25, HD-LS25, HD-OS25, HD-X25		
Dust & Water Protection class	IP54		
Revision	Rev. 1.0 / 17.02.2022		
Changelog	-		

*of the servo only w/o horns and accessories
 ** also available with 270°