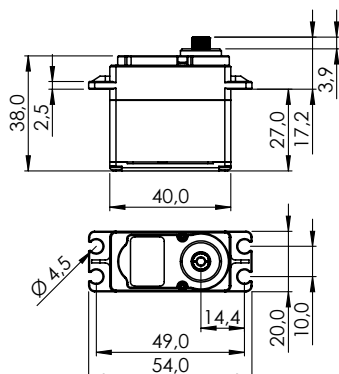


# D951TW

## #116951



General Specification		D951TW	
Control System	Pulse Width Modulation (PWM)		
	PWM Range	900µs   1500µs   2100µs	
Connector Type	Hitec 3P (JR 3P compatible)		
Position Sensor Type	Indirect Drive / 1M Cycle Long Life		
Motor Type	Coreless Metal Brush		
Controller (MCU)	Digital Programmable Amplifier with Mosfet Drive		
Operating Voltage Range	3.5V ~ 8.4V		
Operating Voltage	At 4.8V		At 7.4V
No Load Speed	261°/s (43RPM)		429°/s (71RPM)
Stall Torque	21.0kgcm (205.94Ncm)		35.0kgcm (343.23Ncm)
Idle Current	30mA		30mA
No Load Running Current	300mA		500mA
Stall Current	3,700mA		6,200mA
Deadband Width	1µs		1µs
Operating Travel	Default	±60°	
	Programmable	±87,5°	
	Multi Turn	n/a	
	Continuous Rotation	n/a	
Operating Temperature Range	-20°C ~ +60°C (-4°F ~ +140°F)		
Storage Temperature Range	-		
Vibrations at No Load	-		
Connector Wire Length	300mm		
Connector Wire Gauge	20AWG		
Connector Wire Strand Count	80EA		
Outline Dimensions	40.0 x 20.0 x 38.0mm		
Weight*	78.7g		
Ball Bearing	Dual Ball Bearing / MR106		
Case Material	Full Metal Case		
Gear Material	1 Metal-Plastic & 3 Titanium Alloy Gears		
Gear Train Backlash	-		
Horn Gear Spline	H25T Ø6.0		
Accessories	Mounting Hardware, HD-IM25, HD-LS25, HD-OS25, HD-X25		
Dust & Water Protection class	IP54		
Revision	Rev. 1.0 / 17.02.2022		
Changelog	-		

\*of the servo only w/o horns and accessories