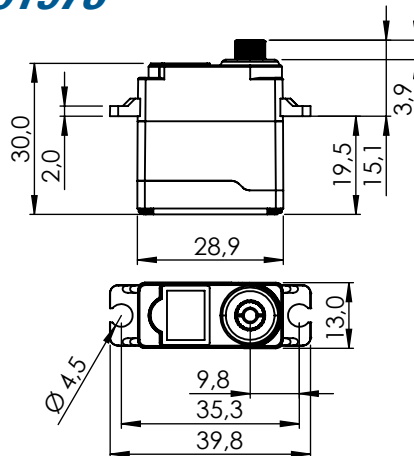


MD89MW-CAN/UAVCAN

#1-01972, #1-01973



General Specification		MD89MW-CAN/UAVCAN		
Control System	CAN BUS			
	Protocol (Mode)	Standard 2.0A	Extended 2.0B	UAVCAN
	Baud-Rate	10kbps ~ 1Mbps		
	Sample-Point	50% or 87.5%		
	Available SERVO ID	1 ~ 254		1 ~ 127
	Available Node ID	1 ~ 2047	1 ~ 536870911	1 ~ 127
	Input Signal Range	0 ~ 5V		
Connector Type	Hitec 4P			
Position Sensor Type	Contactless Magnetic Encoder			
Motor Type	Coreless			
Controller (MCU)	32Bit programmable Digital			
Operating Voltage Range	4.0 ~ 8.4V			
Operating Voltage	At 4.8V	At 6.0V	At 7.4V	
No Load Speed	353°/s (59RPM)	462°/s (77RPM)	545°/s (91RPM)	
Stall Torque	5.3kgcm (51.98Ncm)	6.4kgcm (62.76Ncm)	8.5kgcm (83.36Ncm)	
Idle Current	30mA	30mA	30mA	
No Load Running Current	130mA	160mA	180mA	
Stall Current	1,800mA	2,200mA	2,700mA	
Deadband Width	-	-	-	
Travel	Travel / Command	90° / 4096		
	Servo mode	Left	Center	Right
	Pos Command	+1366	+8192	+15018
	Pos [°]	-150	0	+150
	Turn Mode	Left	Power On	Right
	Pos Command	-16383	0	+16383
	Pos [°]	-359	0	+359
Turn Range	-32760 ~ +32760			
Operating Temperature Range	-20°C ~ +60°C (-4°F ~ +140°F)			
Storage Temperature Range	-30°C ~ +80°C (-31°F ~ +176°F)			
Vibrations at No Load	-			
Connector Wire Length	300mm			
Connector Wire Gauge	22AWG			
Connector Wire Strand Count	60EA			
Outline Dimensions	29.0 x 13.0 x 30.0mm			
Weight*	27.9g			
Ball Bearing	Dual Ball Bearing			
Case Material	Engineering Plastic			
Gear Material	5 Metal Gears			
Gear Train Backlash	Max 0.5°			
Horn Gear Spline	25T Ø6.0			
Accessories	Mounting Hardware, M-I, M-X, M-O			
Dust & Water Protection class	IP4X			
Revision	Rev. 1.0 / 17.02.2022			
Changelog	-			

*of the servo only w/o horns and accessories