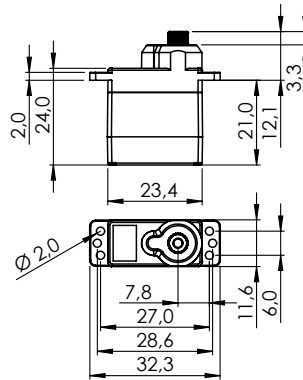


# MD70MH-CAN/UAVCAN

## #1-01201, #1-01644



General Specification		MD70MH-CAN/UAVCAN		
Control System	CAN BUS			
	Protocol (Mode)	Standard 2.0A	Extended 2.0B	UAVCAN
	Baud-Rate	10kbps ~ 1Mbps		
	Sample-Point	50% or 87.5%		
	Available SERVO ID	1 ~ 254		1 ~ 127
	Available Node ID	1 ~ 2047	1 ~ 536870911	1 ~ 127
	Input Signal Range	0 ~ 5V		
Connector Type	Hitec 4P			
Position Sensor Type	Contactless Magnetic Encoder			
Motor Type	Cored			
Controller (MCU)	32Bit programmable Digital			
Operating Voltage Range	4.8V ~ 7.8V			
Operating Voltage	At 6.0V		At 7.4V	
No Load Speed	400°/s (67RPM)		500°/s (83RPM)	
Stall Torque	3.1kgcm (30.40Ncm)		3.8kgcm (37.27Ncm)	
Idle Current	30mA		30mA	
No Load Running Current	200mA		240mA	
Stall Current	1,000mA		1,300mA	
Deadband Width	4µs		4µs	
Travel	Travel / Command	90° / 4096		
	Servo mode	Left	Center	Right
	Pos Command	+1366	+8192	+15018
	Pos [°]	-150	0	+150
	Turn Mode	Left	Power On	Right
	Pos Command	-16383	0	+16383
	Pos [°]	-359	0	+359
Turn Range	-32760 ~ +32760			
Operating Temperature Range	-20°C ~ +60°C (-4°F ~ +140°F)			
Storage Temperature Range	-30°C ~ +80°C (-31°F ~ +176°F)			
Vibrations at No Load	-			
Connector Wire Length	300mm			
Connector Wire Gauge	24AWG			
Connector Wire Strand Count	40EA			
Outline Dimensions	23.6 x 11.6 x 29.0mm			
Weight*	14.2g			
Ball Bearing	Single Ball Bearing			
Case Material	Engineering Plastic			
Gear Material	1 Resin & 4 Metal Gears			
Gear Train Backlash	Max 0.5°			
Horn Gear Spline	Micro 25T Ø5.0			
Accessories	Mounting Hardware, MS-I25, MS-L25, MS-X25			
Dust & Water Protection class	IP4X			
Revision	Rev. 1.0 / 17.02.2022			
Changelog	-			

\*of the servo only w/o horns and accessories