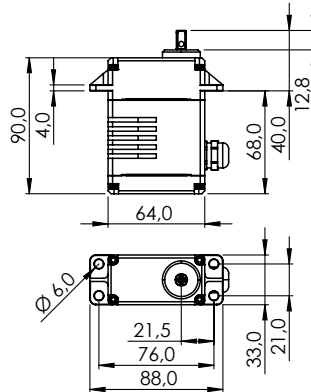


SG33BL-T-24V (GLAND CABLE)

#1-02463



General Specification		SG33BL-T-24V (Gland Cable)	
Control System	Pulse Width Modulation (PWM) / TTL (Half Duplex)		
	PWM Range	900µs 1500µs 2100µs	
Connector Type	-		
Position Sensor Type	Contactless Magnetic Encoder		
Motor Type	BLDC		
Controller (MCU)	32 Bit Programmable Digital		
Operating Voltage Range	18.0V ~ 32.0V		
Operating Voltage	At 24.0V		
No Load Speed	324°/s (54RPM)		
Stall Torque	147.00kgcm (1441.58Ncm)		
Idle Current	20mA		
No Load Running Current	230mA		
Stall Current	6,400mA		
Deadband Width	2µs		
Operating Travel	Default	±60°	
	Programmable	±160°	
	Multi Turn	±2880° (Max ±8 Turns)	
	Continuous Rotation	n/a	
Operating Temperature Range	-30°C ~ +70°C (-22°F ~ +158°F)		
Storage Temperature Range	-40°C ~ +80°C (-40°F ~ +176°F)		
Vibrations at No Load	MIL-STD-810G 514.6C-VII		
Connector Wire Length	400mm		
Connector Wire Gauge	20AWG		
Connector Wire Strand Count	80EA		
Outline Dimensions	64.0 x 33.0 x 95.0mm		
Weight*	480.0g		
Ball Bearing	6 Ball Bearings & 2 Needle Bearings		
Case Material	Rugged Aluminium Alloy		
Gear Material	1 Metal-Plastic & 3 Hardened Steel Gears		
Gear Train Backlash	Max 0.5°		
Horn Gear Spline	Square 6.5 x 6.5		
Accessories	I-MOS		
Dust & Water Protection class	IP68		
Revision & Stand	Rev. 1.0 / 17.03.2022		
Changelog	-		

*of the servo only w/o horns and accessories