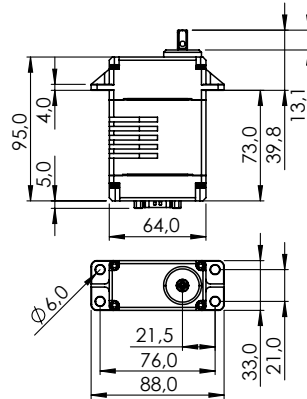


# SG33BL-T-12V (DSUB)

## #1-00932



General Specification		SG33BL-T-12V (DSUB)	
Control System		Pulse Width Modulation (PWM) / TTL (Half Duplex)	
	PWM Range	900µs   1500µs   2100µs	
Connector Type	DB-9 SUB		
Position Sensor Type	Contactless Magnetic Encoder		
Motor Type	BLDC		
Controller (MCU)	32 Bit Programmable Digital		
Operating Voltage Range	9.0V ~ 15.0V		
Operating Voltage	At 12.0V		
No Load Speed	324°/s (54RPM)		
Stall Torque	147.0kgcm (1441.58Ncm)		
Idle Current	45mA		
No Load Running Current	500mA		
Stall Current	10,000mA		
Deadband Width	2µs		
Operating Travel	Default	±60°	
	Programmable	±160°	
	Multi Turn	±2880° (Max ±8 Turns)	
	Continuous Rotation	n/a	
Operating Temperature Range	-30°C ~ +70°C (-22°F ~ +158°F)		
Storage Temperature Range	-40°C ~ +80°C (-40°F ~ +176°F)		
Vibrations at No Load	MIL-STD-810G 514.6C-VII / EN60068-2-6		
Connector Wire Length	-		
Connector Wire Gauge	-		
Connector Wire Strand Count	-		
Outline Dimensions	64.0 x 33.0 x 95.0mm		
Weight*	480.0g		
Ball Bearing	6 Ball Bearings & 2 Needle Bearings		
Case Material	Rugged Aluminium Alloy		
Gear Material	1 Metal-Plastic & 3 Harden Steel Gears		
Gear Train Backlash	Max 0.5°		
Horn Gear Spline	Square 6.5 x 6.5		
Accessories	I-MOS		
Dust & Water Protection class	IP68		
Revision & Stand	Rev. 1.0 / 17.03.2022		
Changelog	-		

\*of the servo only w/o horns and accessories