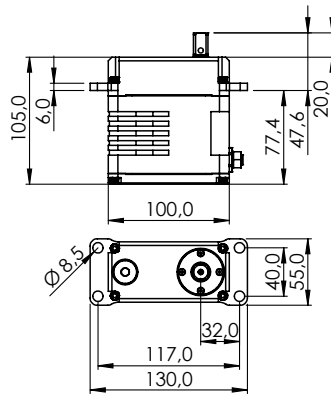


SG50BL-CAN-24V (CIRCULAR)

#1-02412



| General Specification | | SG50BL-CAN-24V (Circular) | | |
|-------------------------------|---|---------------------------|---------------|---------|
| Control System | CAN BUS | | | |
| | Protocol (Mode) | Standard 2.0A | Extended 2.0B | UAVCAN |
| | Baud-Rate | 10kbps ~ 1Mbps | | |
| | Sample-Point | 50% or 87.5% | | |
| | Available SERVO ID | 1 ~ 254 | | 1 ~ 127 |
| | Available Node ID | 1 ~ 2047 | 1 ~ 536870911 | 1 ~ 127 |
| | Input Signal Range | 0 ~ 5V | | |
| Connector Type | Circular | | | |
| Position Sensor Type | Contactless Magnetic Encoder | | | |
| Motor Type | BLDC | | | |
| Controller (MCU) | 32Bit programmable Digital | | | |
| Operating Voltage Range | 18.0 ~ 32.0V | | | |
| Operating Voltage | At 24.0V | | | |
| No Load Speed | 120°/s (20RPM) | | | |
| Stall Torque | 520.0kgcm (5099,46Ncm) | | | |
| Idle Current | 45mA | | | |
| No Load Running Current | 300mA | | | |
| Stall Current | 10,000mA | | | |
| Deadband Width | - | | | |
| Travel | Travel / Command | 90° / 4096 | | |
| | Servo mode | Left | Center | Right |
| | Pos Command | +1366 | +8192 | +15018 |
| | Pos [°] | -150 | 0 | +150 |
| | Turn Mode | Left | Power On | Right |
| | Pos Command | -16383 | 0 | +16383 |
| | Pos [°] | -359 | 0 | +359 |
| | Turn Range | -32760 ~ +32760 | | |
| Operating Temperature Range | -30°C ~ +70°C (-22°F ~ +158°F) | | | |
| Storage Temperature Range | -40°C ~ +80°C (-40°F ~ +176°F) | | | |
| Vibrations at No Load | MIL-STD-810G 516.6 | | | |
| Connector Wire Length | - | | | |
| Connector Wire Gauge | - | | | |
| Connector Wire Strand Count | - | | | |
| Outline Dimensions | 100.0 x 50.0 x 105.0mm | | | |
| Weight* | 1450g | | | |
| Ball Bearing | 4 Angular Ball Bearings & 9 Needle Bearings | | | |
| Case Material | Rugged Aluminium Alloy | | | |
| Gear Material | Hardened Steel Gears | | | |
| Gear Train Backlash | Max 0.5° | | | |
| Horn Gear Spline | Square 12.0 x 12.0 | | | |
| Accessories | I-MOS12 | | | |
| Dust & Water Protection class | IP68 | | | |
| Revision & Stand | Rev. 1.0 / 17.03.2022 | | | |
| Changelog | - | | | |

*of the servo only w/o horns and accessories